

# 1305 CONFEDERATE RD

HOUSTON, TEXAS 77055

LOT: 04 BLOCK: 06

LONG POINT WOODS SEC: 02

LIVING AREA: 3,585 SF

LOT SIZE: 8,320 SF

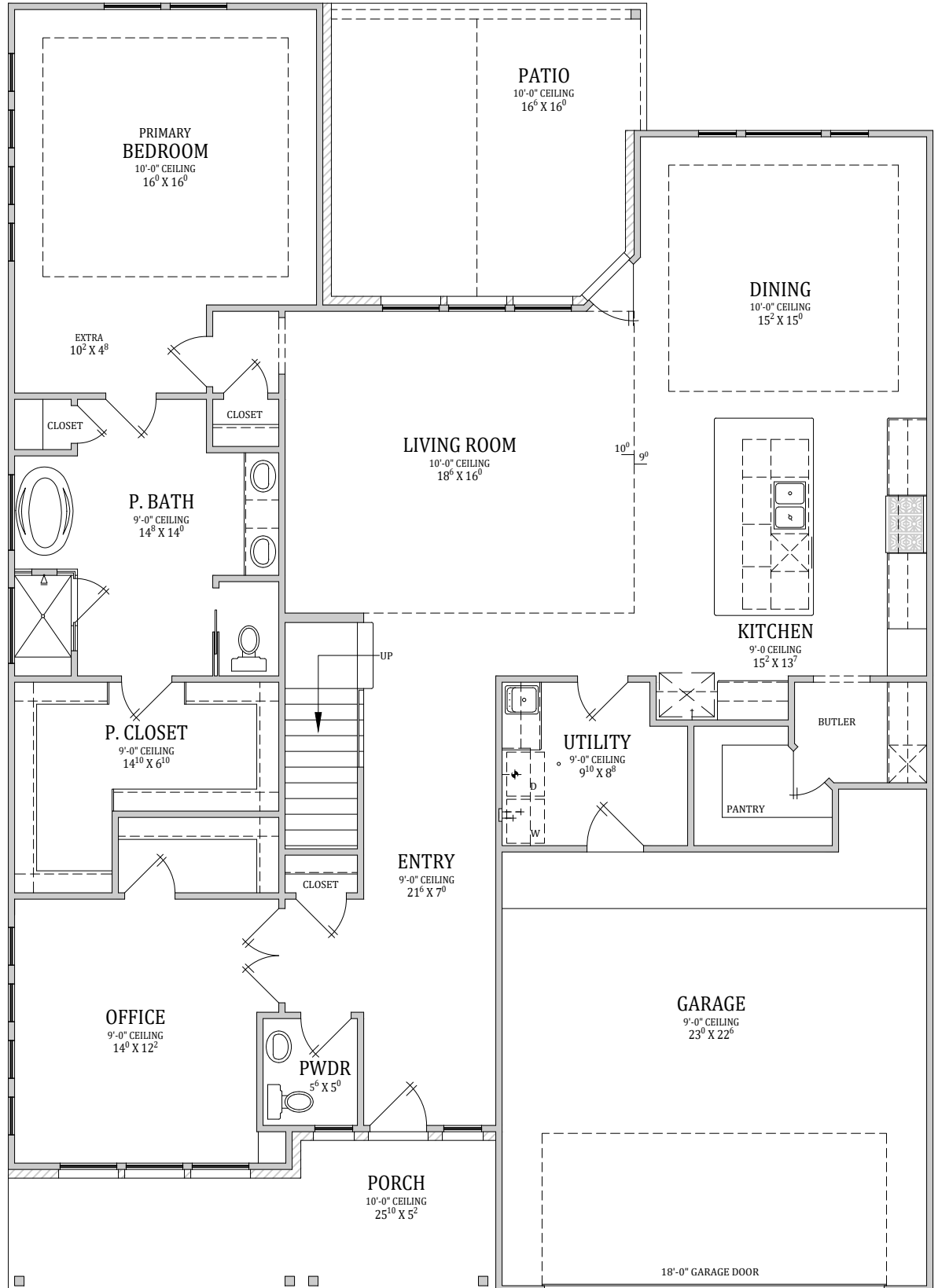
CITY COTTAGE BUILDERS

(713) 557-7181

P.O. BOX 70024, HOUSTON, TEXAS 77270

WWW.CITYCOTTAGEBUILDERS.COM

INFO@CITYCOTTAGEBUILDERS.COM



FIRST FLOOR PLAN

2,239 SQ. FT.

\*ALL ROOM SIZES ARE APPROXIMATE AND MAY CHANGE DURING CONSTRUCTION\*

# 1305 CONFEDERATE RD

HOUSTON, TEXAS 77055

LOT: 04 BLOCK: 06

LONG POINT WOODS SEC: 02

LIVING AREA: 3,585 SQ. FT.

LOT SIZE: 8,320 SQ. FT.

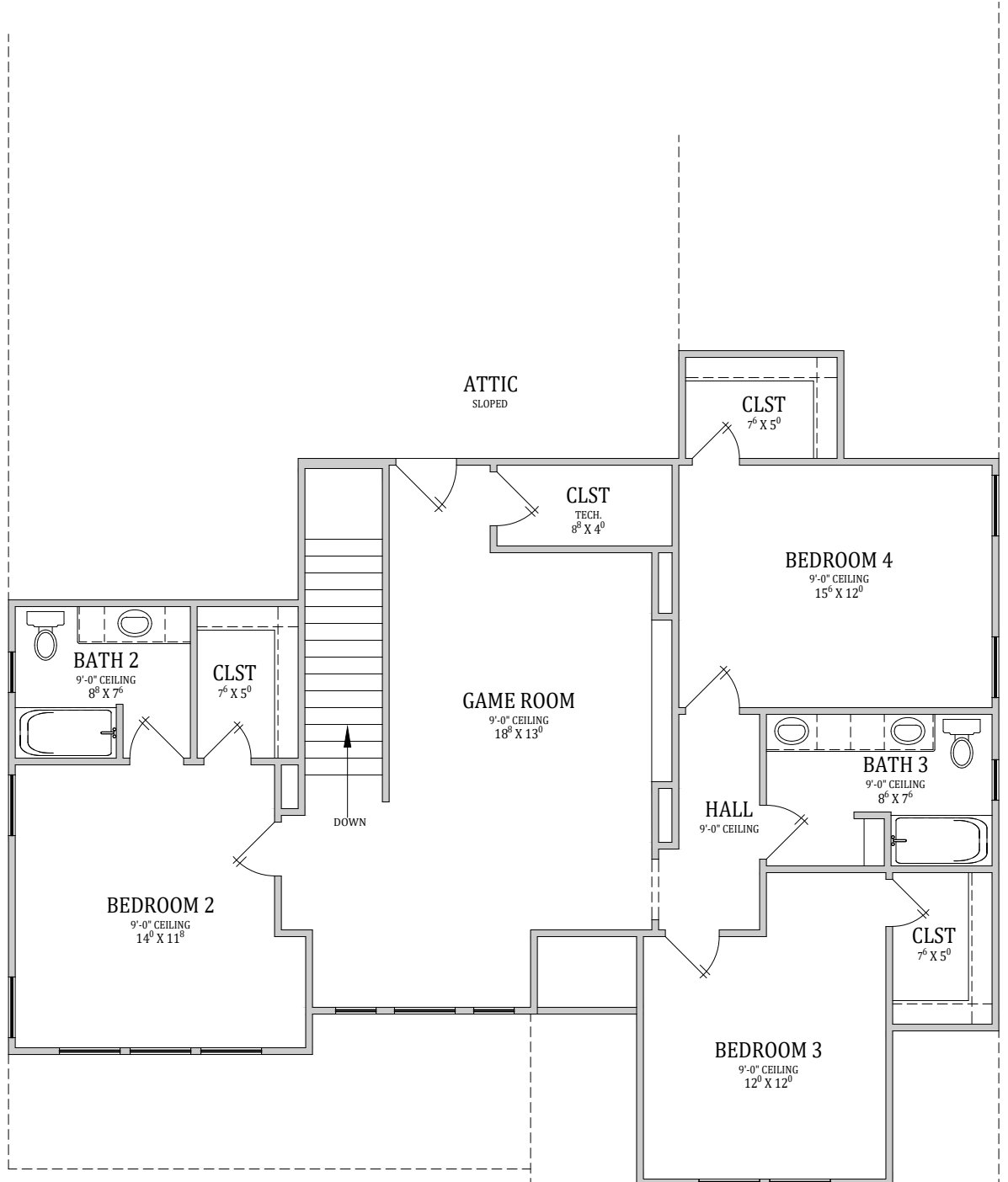
CITY COTTAGE BUILDERS

(713) 557-7181

P.O. BOX 70024, HOUSTON, TEXAS 77270

WWW.CITYCOTTAGEBUILDERS.COM

INFO@CITYCOTTAGEBUILDERS.COM



## SECOND FLOOR PLAN

1,346 SQ. FT.

\*ALL ROOM SIZES ARE APPROXIMATE AND MAY CHANGE DURING CONSTRUCTION\*

# 1305 CONFEDERATE RD

HOUSTON, TEXAS 77055

LOT: 04      BLOCK: 06

LONG POINT WOODS SEC: 02

LIVING AREA: 3,585 SQ. FT.

LOT SIZE: 8,320 SQ. FT.

CITY COTTAGE BUILDERS

(713) 557-7181

P.O. BOX 70024, HOUSTON, TEXAS 77270

[WWW.CITYCOTTAGEBUILDERS.COM](http://WWW.CITYCOTTAGEBUILDERS.COM)

[INFO@CITYCOTTAGEBUILDERS.COM](mailto:INFO@CITYCOTTAGEBUILDERS.COM)



FRONT ELEVATION



REAR ELEVATION